

Strategy details

Inception	1 March 2016
Min. initial investment (direct)	£20,000
Min. initial investment (platform)	£1,000
Rebalancing strategy (min.)	Quarterly
Currency	£ GBP
Annual yield (current)	3.39%

Charges

Annual management charge (direct)	0.75%
Annual management charge (platform)*	0.30%
Ongoing charges figure	0.44%

*Not including platform fees.

Investment objective

To preserve capital in real (inflation-adjusted) terms over the medium to longer term. Investors should expect low levels of reward and a low correlation to stockmarket behaviour, including modest fluctuations in values.

Risk profile

The strategy is managed in accordance with Dynamic Planner risk profile 3, with the strategy's expected volatility targeted to stay within the assigned Dynamic Planner risk profile's boundaries.



About the Hybrid Passive Risk Targeted Managed Service

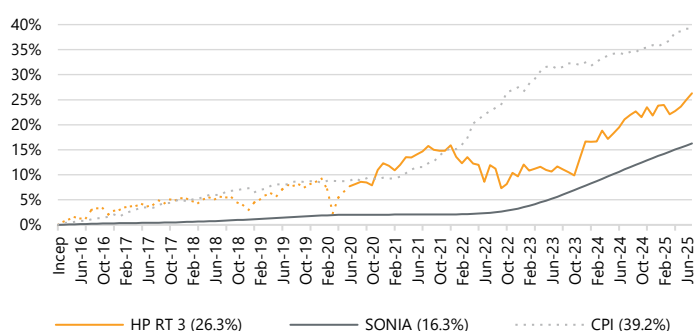
Our Hybrid Passive Risk Targeted ('RT') Managed Service consists of five actively managed investment strategies (Hybrid Passive RT 3-7) that provide lower cost access to our discretionary fund management capabilities through the combination of active and passive collective investments. Each strategy has a different level of risk and expected return, and are rigorously mapped within the volatility boundaries assigned to specific Dynamic Planner risk profiles (RTM 3-7). The service provides a solution that, when cost considerations are paramount, does not compromise on quality.

Investment update

July was a positive month for equity markets with the MSCI World Index rising +2.0% in sterling terms. The clarity provided by the various international trade deals agreed with the US was a major driver of improved investor sentiment as the risk of escalating trade wars is reduced. The UK led the way in terms of returns, with the MSCI UK and the FTSE All-Share indices up 4.4% and 4.0% respectively. The rise in earnings forecasts in the energy and materials sectors played a role in boosting the commodity-heavy UK equity market. UK inflation saw an unanticipated increase during the month. US inflation remained above the Fed's target, and Chair, Jerome Powell, reiterated the central bank's laser focus to wait for further data for clarity on the impact of tariffs on prices before making monetary policy decisions. Resilient eurozone data alleviated pressure on the European Central Bank ('ECB') to cut interest rates. Much like the US, the ECB has opted to maintain interest rates with a view to seeing what the impact of the US-EU trade deal might be. Eurozone inflation held steady at 2.0%. An improved macro backdrop, and better-than-expected activity indicators in China contributed to the boost in Asian markets. The weakening of the tech sector in Japan dampened the performance of the Japanese equity market. Credit markets, supported by strong corporate earnings, outperformed government bonds as spreads narrowed over the month. The Global Aggregate Bond Index fell -1.5% as yields drifted higher. Eurozone government bonds and US treasury yields increased, demonstrating an improving outlook for growth but also increased apprehension of markets due to the ongoing fiscal situation. We are maintaining our exposure to equity markets, and the strategy remains at the upper end of its Dynamic Planner risk profile as we believe the economic backdrop remains favourable and the outlook for corporate earnings remains positive. Having recently taken some fixed income risk out of portfolios, we have redeployed the cash into the alternative investments sector where the funds currently held continue to perform well. We are adopting a more global approach, via the addition of the Jupiter Merian Global Equity Absolute Return ('GEAR') fund, which has a proven track record of producing strong risk-adjusted returns.

Performance

Inception performance



Cumulative performance

	1yr	3yr	5yr*	10yr*
HP RT 3	4.3%	12.8%	16.8%	-
SONIA	4.7%	13.5%	14.0%	-
CPI	3.8%	13.4%	27.3%	-

Annualised performance

	1yr	3yr	5yr*	10yr*
HP RT 3	4.3%	4.1%	3.2%	-
SONIA	4.7%	4.3%	2.6%	-
CPI	3.8%	4.3%	4.9%	-

Discrete performance

	YTD	2024	2023	2022	2021	2020*
HP RT 3	3.7%	4.4%	6.4%	-5.4%	3.2%	3.4%
SONIA	2.6%	5.1%	4.4%	1.1%	0.1%	0.2%
CPI	2.4%	2.6%	3.9%	10.5%	5.4%	0.7%

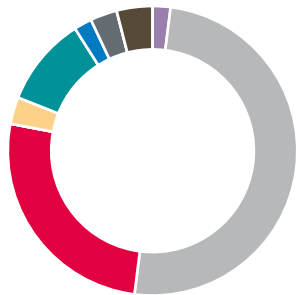
*Performance from inception (01.03.16) to 30.06.20 is simulated past performance based on back-tested data (represented by the orange dashed line).

Source: Bordier UK & FE Analytics as at 31.07.25.

Bordier UK returns net of 0.30% AMC. VAT applied to AMC from inception until 31.08.21. Latest ARC PCI data is provisional. Past performance is not a guide to future results. See full risk warning overleaf.

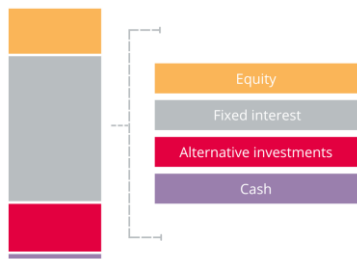
Asset allocation

Sector breakdown



Sector	%
Cash	2
Fixed interest	50
Alternatives	26
UK equity (growth)	3
US equity	10
European equity	2
Asia-Pacific ex Japan equity	3
Thematic and global equity	4

Asset class breakdown



Note: For illustrative purposes only.

Top 10 holdings

Fund	%
Schroder Strategic Credit	10
Vanguard UK Long Duration Gilt Index	9
Fidelity Strategic Bond	8
TwentyFour Corporate Bond	8
Vanguard Global Bond Index	8
Artemis Short-Duration Strategic Bond	7
Premier Miton Tellworth UK Select	7
Vanguard UK Investment Grade Bond Index	7
Janus Henderson Absolute Return	6
Jupiter Merian Global Equity Absolute Return	6

Active/Passive allocation breakdown

Underlying holdings	%
Active allocation	63
Passive allocation	37

Source: FE Analytics as at 31.07.25

Third-party platform availability

We work with the following platforms:



Please enquire about the service for your chosen platform.

Contact us

For further information on this strategy or any of our other investment services please contact a member of our sales team:

t: +44 (0)20 7667 6600
e: sales@bordieruk.com
w: bordieruk.com



Bordier & Cie (UK) PLC | Wealth and Investment Management
23 King Street | St James's | London SW1Y 6QY

Corporate winner or shortlisted for over 100 prestigious industry awards since 2014

Important information

The value of an investment and any income from it may fall as well as rise, may be affected by exchange rate fluctuations and you may not get back the amount you originally invested. The information in this factsheet does not constitute an offer of, or an invitation to buy or sell any security. Levels and bases of tax can change. The securities detailed in this factsheet may not be suitable for all investors. The model portfolio is applied to client accounts by the platform provider but it may take some time for the client accounts to mirror the model. Please note that the calculated OCF from FE Analytics may vary from that stated by your chosen platform provider. Bordier & Cie (UK) PLC recommends that you seek the advice of your financial adviser.

Issued by Bordier & Cie (UK) PLC, 23 King Street, St James's, London SW1Y 6QY. Authorised and regulated by the Financial Conduct Authority. Incorporated in England No. 1583393, registered office as above.